



THE PROPOSED PLANS FOR THE FUTURE
OF KATOOMBA AIRFIELD

KATOOMBA AIRFIELD

Derek & Floyd Larsen (Licensees)

Overview of FLYBLUE's vision for YKAT

Airfield site overview:

89 acres located 4km east of Medlow Bath & 5km north of Katoomba

Blue Mountains:

4 million+ visitors/year
(making it one of top tourist destinations in Australia)

Current population ~82k

One road in

One road out

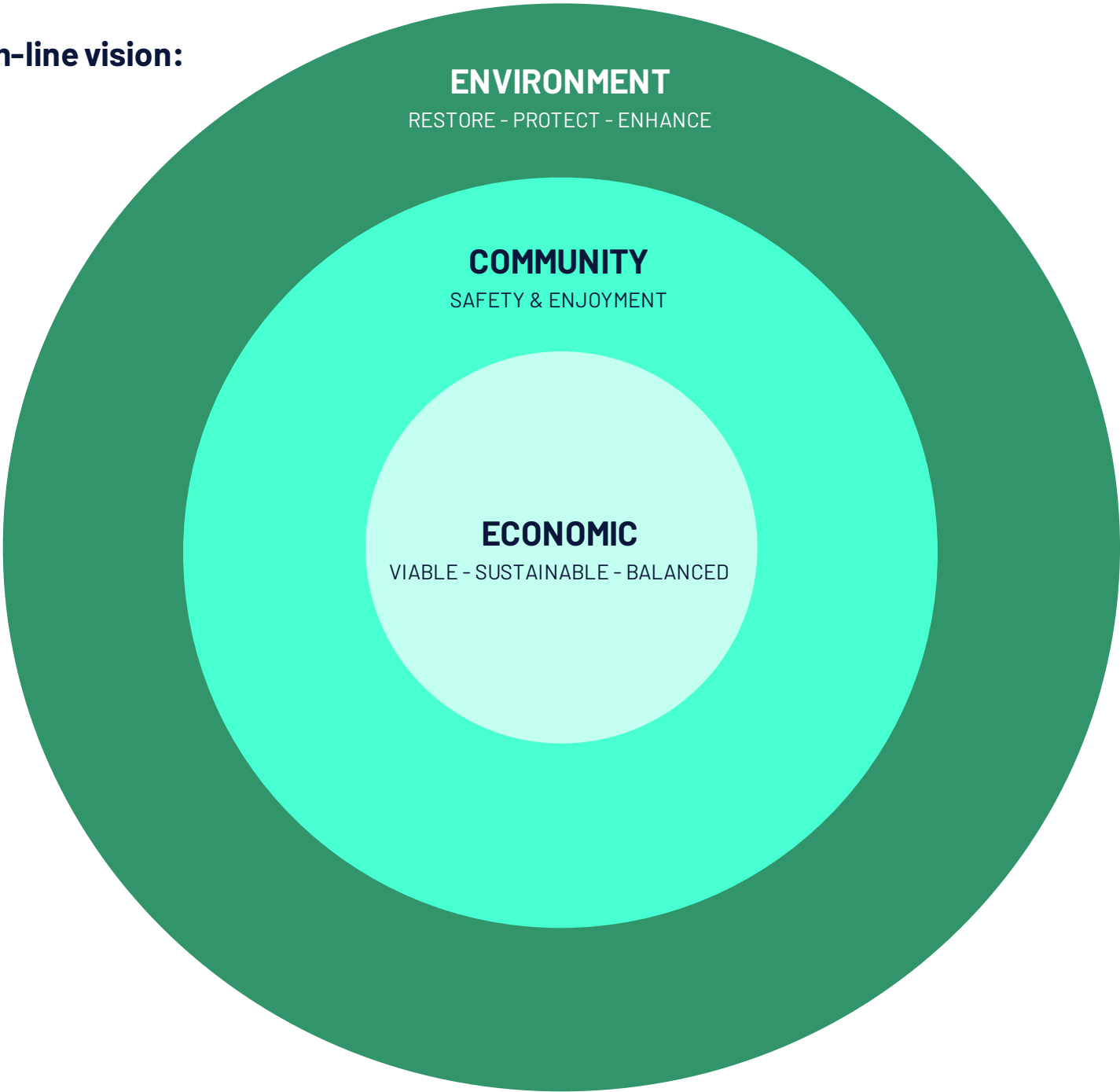


Katoomba Airfield (YKAT) Officially Opened in 1969



Harold Coates MP & Mayor Ern Lesslie attended amongst many other guests

YKAT triple bottom-line vision:



KATOOMBA AIRFIELD (YKAT) – SAFETY 1ST



Currently continuing to be open to all helicopter operations, including emergency & defence forces; closed to fixed-wing operations except for emergencies due to need for 06/24 runway repair and upgrade = fixed-wing pilots land at their own risk

AVIATION & NON-AVIATION ZONES:

ENVIRONMENT

RESTORE - PROTECT - ENHANCE



NET ENVIRONMENTAL GAIN:

ENVIRONMENT

environmental offset with closure of runway 10/28 = circa 2.5 ha offset for homogenous regeneration (net env gain)



HIGHEST PRIORITY IS TO STOP FURTHER EROSION:

ENVIRONMENT

ENVIRONMENTAL PROTECTION WORKS

REPAIR & UPGRADE RUNWAY 06/24

Initial key environmental recommendation: "...
highest priority for site management is to protect
the areas from further erosion..."

Area Tool



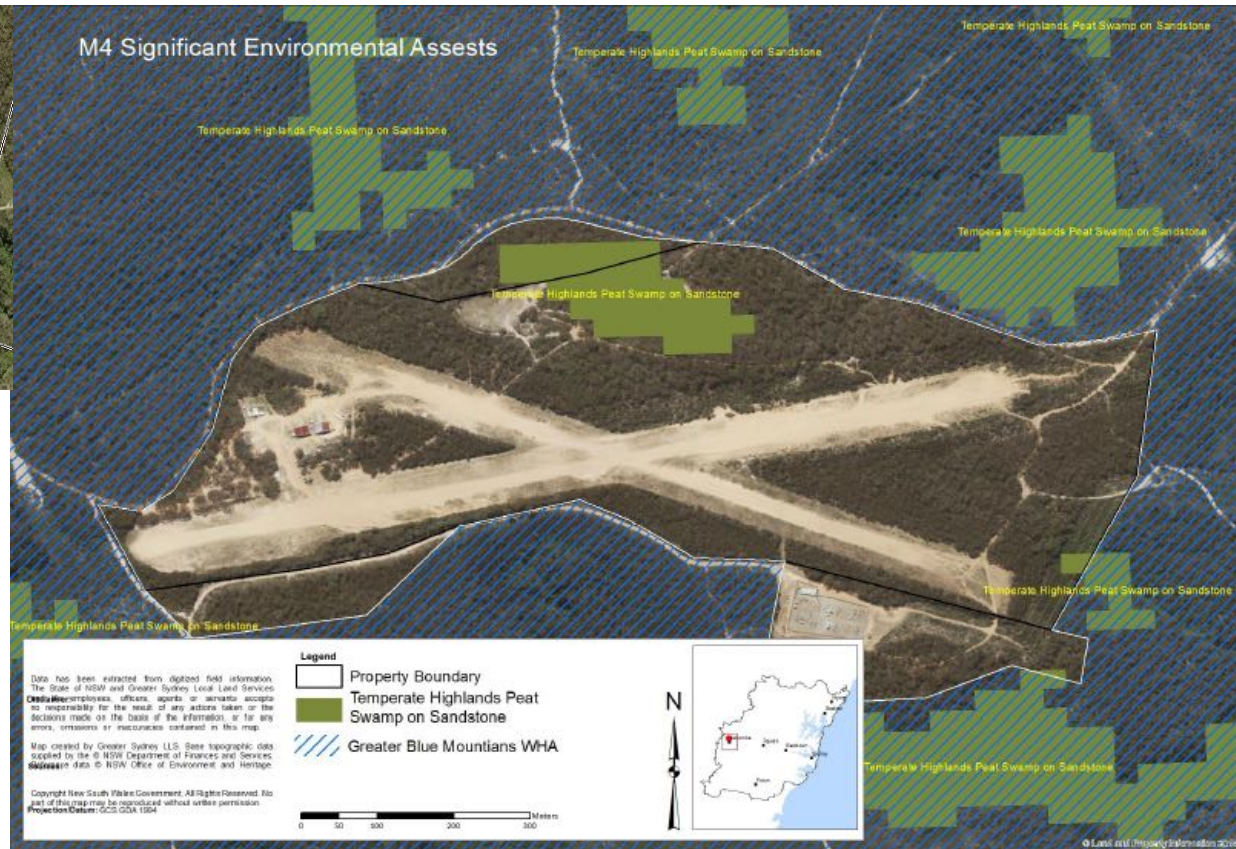
Area: 1.891 ha
Perimeter: 1.972 km



BOTH SITES WILL BE PROTECTED VIA NON-AVIATION ZONING & ENVIRO OFFSET:

ENVIRONMENT

Blue Mountains Hanging Swamps may be home to the endangered species: Giant Dragonfly and Blue Mountains Water Skink. By securely fencing the non-aviation zone and closing runway 10/28 with the eastern portion being dedicated to homogenous regeneration, along with immediate environmental remediation works, both Hanging Swamps present on the airfield will be protected into the future.



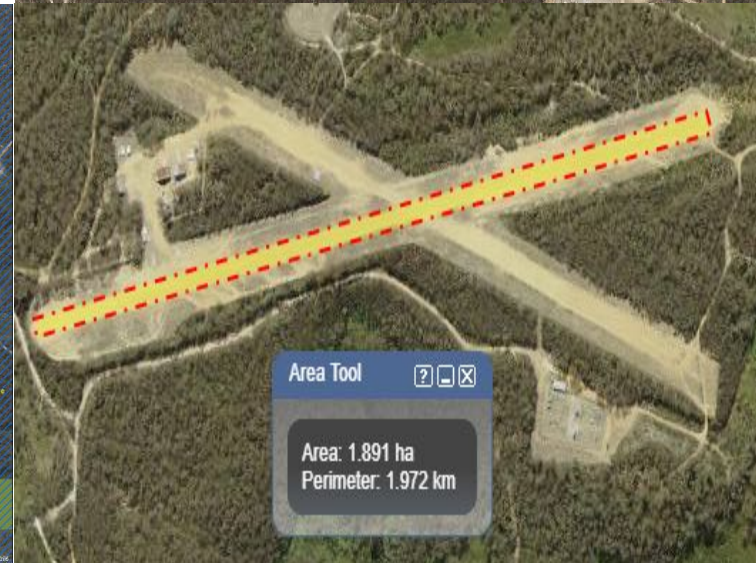
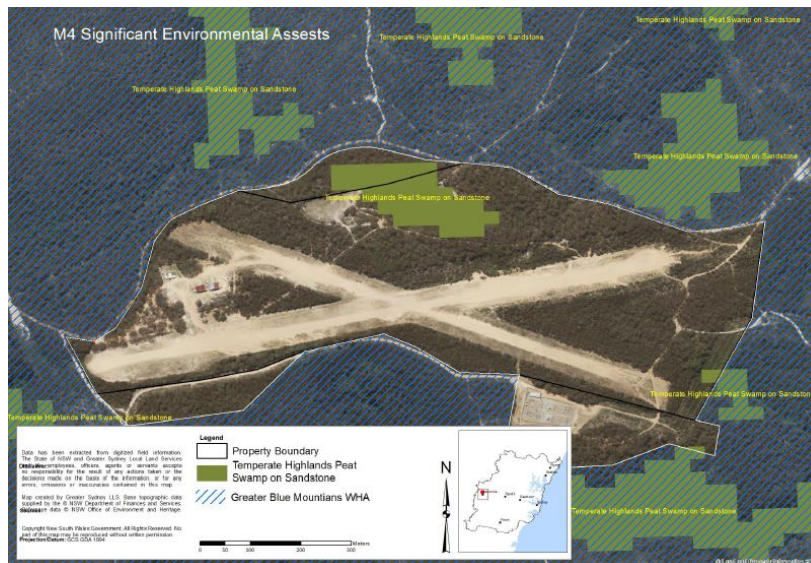
AVIATION & NON-AVIATION ZONES
ENVIRONMENT
RESTORE - PROTECT - ENHANCE



INTRODUCTION OF A RESPONSIBLE & ONGOING CARBON OFFSET PROGRAM:

ENVIRONMENT

RESTORE - PROTECT - ENHANCE



100%+ CARBON OFFSETS KATOOMBA AIRFIELD

- FLYBLUE will do everything we can to offset carbon emissions by planting trees
- We will achieve this by partnering with Greenfleet, Australia's most respected source of **biodiverse carbon offsets**
- Greenfleet connect people and organisations with real climate action by utilising **offset donations** to **plant trees** and restore forests
 - To learn more about GreenFleet visit: www.greenfleet.com.au
- FLYBLUE has committed to donate a tree for every flight into and out of Katoomba Airfield, which is more than required to ensure carbon neutrality
- FLYBLUE's Ongoing Socially and Environmentally Responsible **Carbon Offset Program**
 - 1 FLIGHT = 1 TREE



COMMUNITY SAFETY 1ST

...greatest threat to the community & the environment is fire..



GROUND ZERO

EMERGENCY SERVICES TAKE PRECEDENCE AT ALL TIMES!



EXAMPLE

Emergency services utilisation 1st week Nov 2018



AVIATION ZONE SAFETY & SECURITY INSTALLATIONS

Priority is safety & wellbeing of aviators &
general public:



COMMUNITY

SAFETY & ENJOYMENT

Continued community enjoyment of non-aviation zones:
bushwalkers & other community activities



Economic benefit to Blue Mtns community:

ECONOMIC **VIALE - SUSTAINABLE - BALANCED**

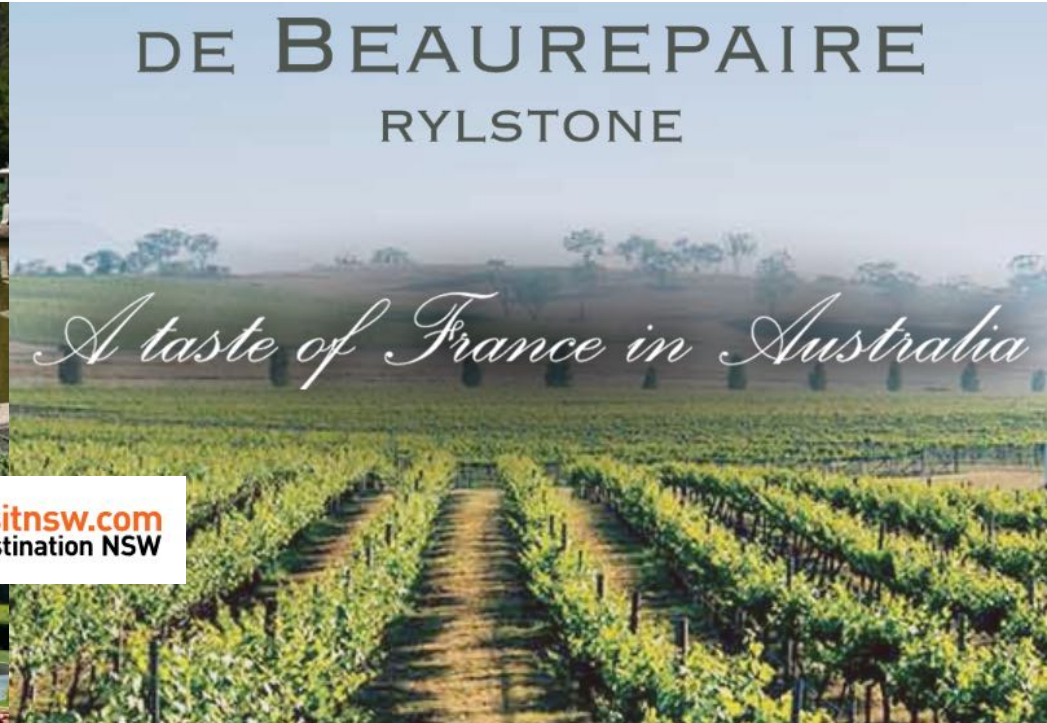
Goal & Vision for the Blue Mountains:

"....grow the visitor economy in a sustainable manner, focusing on growing visitor yield rather than visitor numbers..."



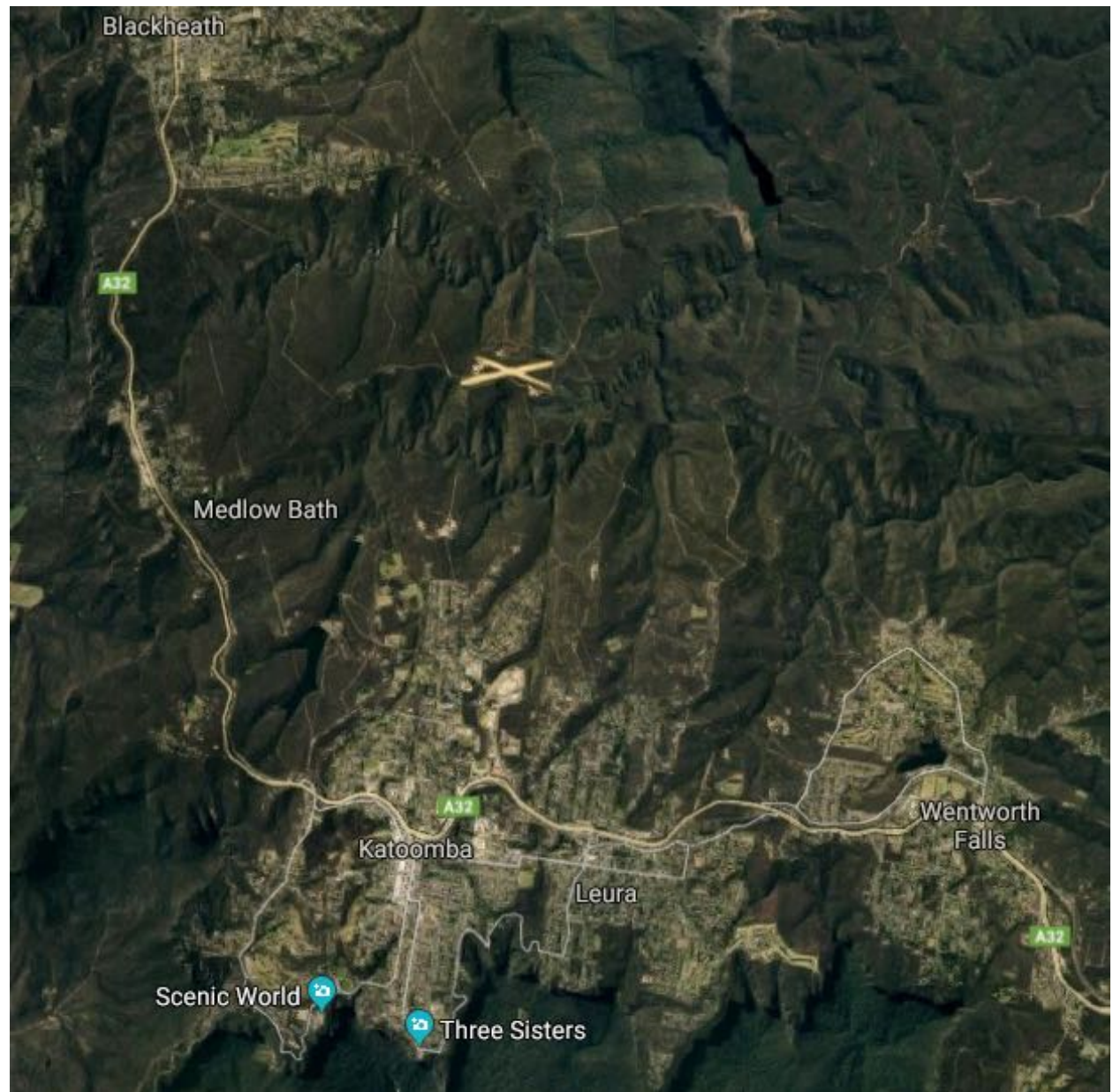
ECONOMIC

Blue Mountains tourism meaning more than just a destination point but can become a true “hub-&-spoke” model acting as a gateway for tourism to central west with heli-flights to [wineries](#), [gardens](#), [caves](#), [fishing activities](#) & more...



AUSTRALIAN CIVIL AVIATION LAW

Important to understand Australian Civil Aviation Law & how this relates to all operators conducting tourist flights over the Blue Mountains & originating from airports outside of the Blue Mountains:





Commonwealth Consolidated Regulations

[\[Index\]](#) [\[Table\]](#) [\[Search\]](#) [\[Search this Regulation\]](#) [\[Notes\]](#) [\[Noteup\]](#) [\[Previous\]](#) [\[Next\]](#) [\[Download\]](#) [\[Help\]](#)

CIVIL AVIATION REGULATIONS 1988 - REG 157

Low flying

- (1) The pilot in command of an aircraft must not fly the aircraft over:
 - (a) any city, town or populous area at a height lower than 1,000 feet; or
 - (b) any other area at a height lower than 500 feet.

Penalty: 50 penalty units.

- (2) An offence against subregulation (1) is an offence of strict liability.

Note: For *strict liability*, see section 6.1 of the *Criminal Code*.

- (3) A height specified in subregulation (1) is the height above the highest point of the terrain, and any object on it, within a radius of:

- (a) in the case of an aircraft other than a helicopter--600 metres; or
- (b) in the case of a helicopter--300 metres;

from a point on the terrain vertically below the aircraft.

(3A) Paragraph (1)(a) does not apply in respect of a helicopter flying at a designated altitude within an access lane details of which have been published in the AIP or NOTAMS for use by helicopters arriving at or departing from a specified place.

- (4) Subregulation (1) does not apply if:

- (a) through stress of weather or any other unavoidable cause it is essential that a lower height be maintained; or
- (b) the aircraft is engaged in private operations or aerial work operations, being operations that require low flying, and the owner or operator of the aircraft has received from CASA either a general permit for all flights or a specific permit for the particular flight to be made at a lower height while engaged in such operations; or
- (c) the pilot of the aircraft is receiving flight training in low-level operations or aerial application operations, within the meaning of Part 61 of CASR; or
- (d) the pilot of the aircraft is engaged in a baulked approach procedure, or the practice of such procedure under the supervision of a flight instructor or a check pilot; or
- (e) the aircraft is flying in the course of actually taking-off or landing at an aerodrome; or
- (f) the pilot of the aircraft is engaged in:
 - (i) a search; or
 - (ii) a rescue; or
 - (iii) dropping supplies;in a search and rescue operation; or

AUSTRALIAN CIVIL AVIATION LAW

CIVIL AVIATION REGULATIONS 1988 - REG 157

Low flying

- (1) The pilot in command of an aircraft must not fly the aircraft over:
 - (a) any city, town or populous area at a height lower than 1,000 feet; or
 - (b) any other area at a height lower than 500 feet.

KATOOMBA AIRFIELD (YKAT)

AIR SERVICES AUSTRALIA ERSA(AVIATION EN-ROUTE SUPPLEMENT)

AIP Australia

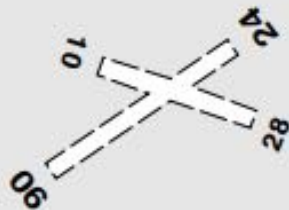
16 AUG 2018

FAC YKAT - 1

KATOOMBA

ELEV 3280

FULL NOTAM SERVICE NOT AVBL



NSW

S 33 40.1

E 150 19.4

UTC +10

VAR 12 DEG E

YKAT

UNCR

AD OPR Derek & Floyd Larsen of Blackbird Aviation, P.O. Box 373, Blackheath, NSW, 2785. Email: derek_larsen@optusnet.com.au. Mobile 0400 409 689.

REMARKS

The airfield is currently closed to all fixed wing operations due to a requirement for safety upgrades until further notice.

Call + 61 (0) 400 409 689 or email: derek_larsen@optusnet.com.au during daylight hours for any additional information.

AERODROME OBSTACLES

Power lines crossing before RWY 28 THR are marked with red balls.

ATS COMMUNICATIONS FACILITIES

FIA MELBOURNE CENTRE 135.25

FLIGHT PROCEDURES

1. Right hand circuits required when OPR RWY 06.
2. Subject to weather or other operational constraints, RWY 24 is preferred RWY.

CTAF 126.7

ADDITIONAL INFORMATION

Turbulence and windshear during winds above 15KT.

CHARTS RELATED TO THE AERODROME

WAC 3456.

BLUE MOUNTAINS NATIONAL PARK

FLY NEIGHBOURLY ADVICE CURRENTLY IN ERSA

12. FN 2 - BLUE MOUNTAINS NATIONAL PARK - Fly Neighbourly Advice

- 12.1 The Blue Mountains National Park is administered by the NSW National Parks and Wildlife Service (NPWS) in accordance with the National Parks and Wildlife Act 1974. The park contains sensitive environmental areas.
- 12.2 Pilots undertaking sightseeing flights should obtain details of the areas to be avoided and the preferred scenic routes in the Katoomba area from the Park Manager.
- 12.3 The Park Manager can be contacted by Phone on 02 4787 8877, or Fax on 02 4787 8514, or by writing to:
The District Manager,
Blue Mountains National Park,
PO Box 43, BLACKHEATH NSW 2785.

- 12.4 Except when operating on preferred scenic routes, pilots are requested to maintain a minimum altitude of 2000FT above the surface of the park (the surface being defined as the highest point of terrain, and any object on it, within a radius of 600M of a point vertically below the aircraft), unless operation at this altitude would jeopardise the safe conduct of the flight.

OPERATIONAL PROCEDURES – EXAMPLE:

FLYBLUE is committed to introduction & ongoing enforcement of strict
“Conditions of Use” for YKAT



General Procedures

IMPORTANT

! – **Rescue Helicopter Operations** take precedence at all times.

! – **Monitor CTAF for Skydive Ops** – jumping overhead and landing on site.

- Avoid all built up areas
- Avoid Golf Course to East
- No flight below 1000' AMSL
- No loitering in the circuit area
- Avoid overflight if possible
- Try to minimise noise as much as possible
- CTAF 132.1, currently called “Lake Macquarie Airport”
- No ops before 8am Saturday and 8am Sundays and public holidays, except for flight planning.

Departures

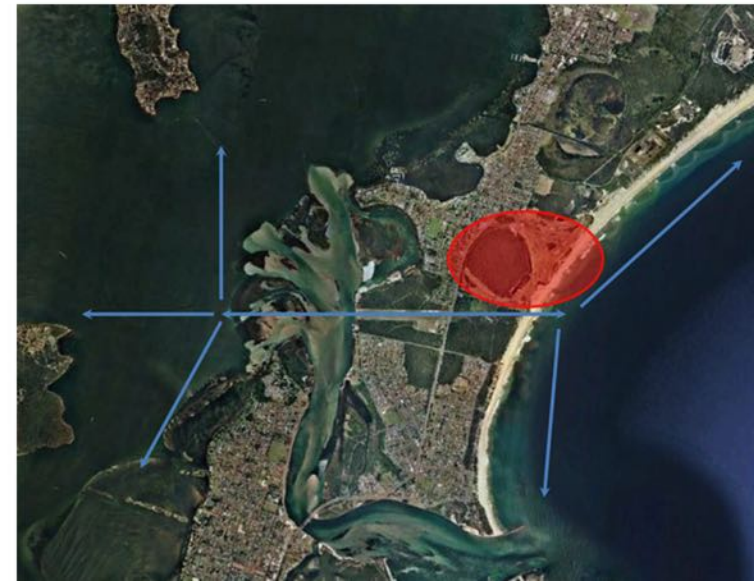
Gyro's may occupy runway for longer than normal due to building up rotor speed.

Rwy 07

- Back track available if not busy
- Taxiway available on south side (unswept)
- Run ups on turning bay just prior to takeoff
- Depart along coast either direction
- Do not overfly runway on departure

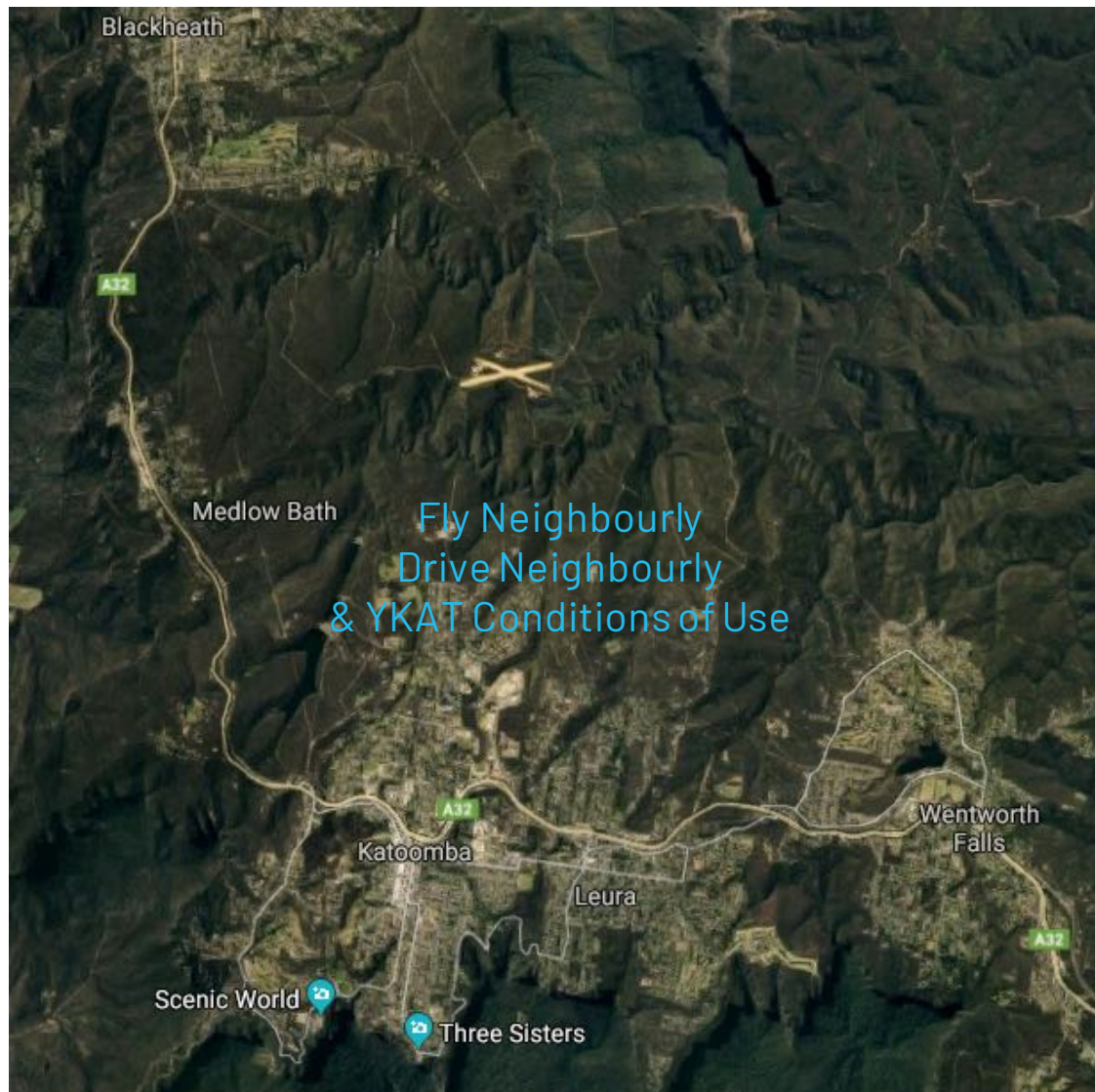
Rwy 25

- Run ups at hold facing North
- Depart on Upwind, or Crosswind west of Swansea
- Do not overfly runway on departure



Collaboration & Consultation

Formation of a Stakeholder Group to provide input into new “Fly Neighbourly” policy & “General Conditions of Use” for all aircraft using Katoomba Airfield, addressing flight paths, curfews etc..



Current Tourism Aviation Operators' based outside of Blue Mountains & their estimated flight time to YKAT

Bathurst to Katoomba = ~25 minutes

Camden to Katoomba = ~20 minutes

Bankstown to Katoomba = ~24 minutes

Richmond to Katoomba = ~18 minutes

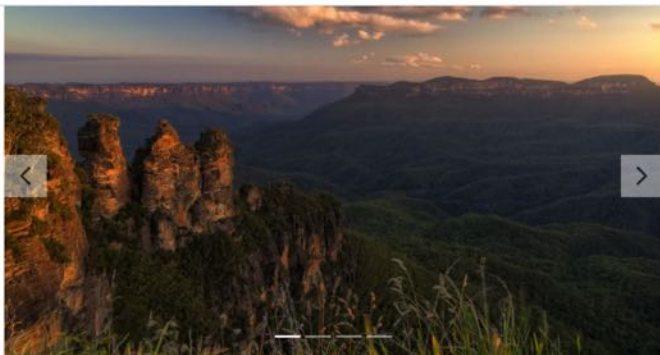
(Badgerys Creek to Katoomba = ~18 minutes)

Today there are MANY heli-charter operators offering Joy Flights over the Blue Mountains, coming from airports outside of the Blue Mountains - e.g.

Use a Voucher



Experiences ▾ Location ▾ Christmas Gifts ▾ Inspire Me ▾ Gifts and Hampers ▾ For Businesses ▾ Gift Vouchers



Overview

Highlights

- Breathtaking scenic flight from Sydney to Blue Mountains
- Soar above the region with views of The Three Sisters and Megalong Valley
- Pass the Sydney Harbour Bridge and Opera House

Take to the skies for an incredible helicopter flight to the Blue Mountains, departing from Sydney. Soak up panoramic views of the World Heritage-Listed area including The Three Sisters, Katoomba, Megalong Valley and Jamison Valley, before making your way back to Sydney via the iconic Harbour.

For 1 person
90 minutes

\$820 each

Select Qty 1 ▾

Add to Cart

Use **afterpay** 4 fortnightly payments of \$205.00 [Learn more](#)

3 years to use the value of your voucher.

Free exchanges.

Our price guarantee.

Handpicked suppliers.

BLUE MOUNTAINS HELITOUR

BLUE MOUNTAINS HELICOPTER FLIGHTS/DAY TOURS AND PACKAGES...



Bathed in a beautiful misty blue haze, you'll be in awe of its rugged wilderness and magnificent views as we fly you into the heart of the Blue Mountains. Let your imagination run wild in this World Heritage listed paradise.

Departing from Sydney Airport you will enjoy a spectacular **40-minute flight (via the Harbour)** before landing on a remote airstrip in the Blue

Mountains... It's then into the 4WD for a **Private** tour of the region where you'll enjoy stunning scenery, sights & sounds that are guaranteed to **awaken the senses**.

Get off the beaten track & take in the ancient rock formations & vistas before enjoying a relaxed lunch in the **Australian bush** that will create memories to last a lifetime. Includes a visit to **Katoomba Falls, Point Pilcher, Evan's Lookout or Govetts Leap** to view the the spectacular Grose Valley – The **Three Sisters** rock formation and the **Scenic Cableway**, a 545 metre cable car ride into the World Heritage Listed rainforest of the Jamison valley.

From here, you can stroll through tranquil scenery along the **Rainforest** Boardwalk before returning through the ancient rainforest on **The Scenic Railway** (The world's steepest incline railway with a gradient of 52 degrees!).

Note: Tours to the Blue Mountains are suitable for all ages & degrees of fitness as each tour is customised to suit your requirements. **Guaranteed to be a great day out that you'll never forget!**



VISIT OUR FACEBOOK PAGE

VIEW INSTAGRAM FEED



UNIQUE BENEFITS WHEN CHOOSING TO FLY WITH BLUE SKY HELICOPTERS



CITY TO HELIPORT (GROUND) TRANSPORT OPTIONS/OR FREE CAR PARKING AT THE HELIPORT.

Blue Mountains Helicopter Day Trip from Sydney Including Scenic World

★★★★★ 20 Reviews Sydney, Australia



from A\$1,000.00

Lowest Price Guarantee

Select Date and Travelers

Wednesday, Dec 5, 2018

Number of travelers

Check Availability

Sydney Tours

All Tours

Air, Helicopter & Balloon Tours
Classes & Workshops
Cruises, Sailing & Water Tours
Cultural & Theme Tours
Day Trips & Excursions
Food, Wine & Nightlife
Holiday & Seasonal Tours
Kid Friendly

5 hours (Approx.) Hotel pickup offered Mobile ticket Offered in: English

Overview

A trip to Sydney is not complete without a visit to Australia's most accessible wilderness region, spanning over one million hectares - the UNESCO World Heritage-listed Blue Mountains. With this package, you'll enjoy a helicopter ride over Sydney Harbour and the spectacular Blue Mountains; close up views of the Sisters; a delicious lunch and all access admission into Blue Mountains Scenic World where you can enjoy the expansive of rugged bushland stretching across the valley floor to the horizon in the distance. Perfect for a closer look with a ride on the world's steepest railway descending to the base of the cliffs below and an ancient rainforest for a short bushwalk to nearby waterfalls.

Scenic helicopter tour of Australia's Blue Mountains from Sydney

Everything AUSTRALIA NEW ZEALAND

Summer / 2:07pm G+ Instagram Facebook Like AUD My Basket Checkout

EXPERIENCES LOCATIONS HELP & INFO

Talk to a human: +61 3 9015 7830 Search this site

Easy to book - Secure Online Payments - Instant email confirmation - Flexible to make changes

You are here: Home > Helicopter Flight Blue Mountains Heli Magic

Helicopter Flight - Blue Mountains Heli Magic Sydney

Pin It Share

About

Q&As

Where?

Gift Voucher

Helicopter Flight - Blue Mountains Heli Magic

VIEW PRICES

ASK A QUESTION



sydney



Sydney Heli Tours

Blue Mountains Helicopter Flight

HELP CODE: D2B-1AFA

- ★ 90 minute helicopter flight to Blue Mountains
- ★ Sydney CBD hotel return transfers
- ★ Refreshments before/after your flight
- ★ Panoramic views of the Blue Mountains
- ★ World class commentary during the flight
- ★ Spectacular sights of Sydney Harbour

2+ Million
Customers

7 Days a Week
Support

No Booking
Fees

Australian
Owned

From \$840.00 AUD

GET
YOUR
GUIDE

Where are you going?



English ▾

AUD (AS) ▾

Cart

Help

Log In ▾

Product ID: 69453

Australia ▸ New South Wales ▸ Sydney ▸ Blue Mountains

Blue Mountains Tour by Helicopter

★★★★★ 5.0 / 5 1 Review



Let the majesty of the Blue Mountains unfold before you as you fly from the urban jungle of Sydney to the mountains and rainforest. Enjoy all that Scenic World has to offer: cable cars, the world's steepest scenic railway and panoramic mountain views.

From
AS 1,000
per person

Book now

Blue Mountains Helicopter Tours

Sort by Popularity ▾ To Blue Mountains From Blue Mountains All Tours

Sydney to Blue Mountains Helicopter Tour

Depart from Sydney for an epic wilderness flight to the Blue Mountains.



Avoid the crowds and explore Sydney's famous Blue Mountains from the best vantage point - from a chopper! See the Three Sisters, Katoomba, explore the valleys and catchment areas and fly over the iconic highlights of the Sydney Harbour.

Hop aboard the chopper and you'll see a series of panoramic views of the Blue Mountains including the Three Sisters, Katoomba, the Megalong Valley and the Warragamba Catchment area before heading back to Sydney to see more of the stunning sights of Sydney Harbour including the Sydney Opera House and Harbour Bridge.



Highlights:

- 80 - 90 minute helicopter flight taking in the sights of the Blue Mountains and Sydney Harbour.
- See full panoramic views of the Blue Mountains including the Three Sisters, Katoomba, the Megalong Valley and the Warragamba Catchment area before making your way back to Sydney for more of the spectacular sights of Sydney Harbour including the Harbour Bridge, and the Sydney Opera House.
- Free return hotel to heliport shuttle bus service.
- Opportunity to purchase a real time DVD of your very own flight.
- Complementary refreshments after your flight.
- World class commentary during the flight from our highly experienced professional pilots.

Book a
Sydney to
Blue
Mountains
Helicopter
Flight.

BOOK
NOW

Activity Types

Boats & Water

Activities (1)

Scenic Cruise (1)

Food & Wine (2)

Food & Wine (2)

Planes, Trains &
Automobiles (1)

Helicopter (1)

Seaplane &

Sightseeing Flights



FROM \$840

Blue Mountains 90min Scenic
Heli Flight

Looking for Things to Do?

To book even more experiences, attractions and tours in all the major regions of Australia, be sure to visit our partners at **Experience Oz**.

 Things to do in Australia



EXCLUSIVE BLUE MOUNTAINS WITH HELICOPTER

BM 106

Spend the whole day exploring the natural beauty of the Blue Mountains world heritage area. Time is on our side as we take the road less travelled on this private Blue Mountains tour.


Helicopter tour/transfer from Sydney to Blue Mountains


Q Search



PRIVATE CUSTOMISED
ADVENTURES

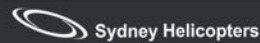
BLUE MOUNTAINS TOUR BOOKING
ENQUIRY


Know better. Love better. Do better.

Cloud 9 Tours
TripAdvisor Traveler Rating

Based on 61 traveler reviews

TripAdvisor Ranking
#19 of 109 Food & Drink in Sydney

Most Recent Traveler Reviews
Nov 29, 2018: "Ask for Greg!"
Oct 28, 2018: "Fantastic day out with Cloud 9 Tours!"
Oct 7, 2018: "A great customised tour!"
Oct 4, 2018: "Hens day trip to The Hunter Valley!"
Aug 6, 2018: "Amazing day, even better customer service!"



ABOUT TOURS CHARTERS AIRWORK EVENTS BLOG CONTACT

BLUE MOUNTAINS AND BEYOND

HIGHLIGHTS

Relax into the day with a scenic flight followed by a beautiful lunch made of some of the best Australian produce. The flight will depart via Sydney Harbour and then on track for the three sisters in the world heritage listed Blue Mountains. From the beautiful harbour where Sydney is located to the hidden valleys and gorges of the Blue Mountains, this shows off what our region has to offer. Once past Katoomba we will begin our descent over the Megalong Valley into our landing location in the picturesque Little Hartley. Then kick back and enjoy delicious Australian cuisine whilst taking in the country surroundings.

Here is an excerpt from Ambergere Rose Inn about the produce they use:

Our philosophy is pretty simple – to deliver a dining experience that reflects the history of Ambergere with a focus on local seasonal produce that showcases new ingredients and rediscovers forgotten ones. Food should be fresh, delicious and shared.

DURATION

Approx 4 hours

ITINERARY

11:15 Arrive at our Parramatta/Rosehill Heliport for pre flight briefing
11:45 Helicopter departs
12:30 Arrive at Little Hartley for Lunch at Ambergere Rose Inn
15:00 Depart for the Heliport
15:30 Land back at Parramatta/Rosehill Heliport

DESTINATIONS

Your flight includes taking off and tracking west you will pass the Olympic site, and then to the spectacular Three Sisters, Wentworth Falls and the rugged Blue Mountains with picturesque valleys.

PRICING TABLE

2 Passengers	\$1300 per person
3 Passengers	\$895 per person
4 or more Passengers	\$795 per person

BOOK TOUR

ORDER GIFT VOUCHER



SUMMARY

KATOOMBA AIRFIELD SITE:

- Net positive environmental rejuvenation
- Whole of site safety & environmental upgrade
- 50% dedicated to non-aviation use
- Provides an air “Safety Ramp” for General Aviation
- Ground Zero during emergencies

FLYBLUE OPERATIONS:

- Stakeholder group collaboration and input
- Does not represent biodiversity or biosecurity threat to the World Heritage National Park
- New “Fly Neighbourly” & airfield “Conditions of Use” protocols will be enforced
- Ongoing Socially & Environmentally Responsible Carbon Offset Program
- Emergency Services take precedence at all times
- Economic alignment with BMCC’s Destination Management Plan

